

4SM



GENERALITÀ / FEATURES

Pompe multistadio sommerse con giranti flottanti, adatte per un contenuto di sabbia non superiore a 250 g/m³ a flusso radiale e semiassiale indicate per il sollevamento di acque pulite per pozzi da 4" e oltre, trovano applicazioni sia nella irrigazione che per pressurizzazione domestica e industriale. Portate fino a 24 m³/h, prevalenze fino a 347 m. Massimo diametro della pompa 98 mm.

Submersible multistage pump with floating impellers, suitable for a maximum sand contents of 250 g/m³ radial and semi axial impellers suitable to lift clean water from 4" wells, is used in irrigation and in domestic and industrial field to boost pressure. Capacities up to 24 m³/h, heads up to 347 m. Maximum pump diameter 98 mm.

MATERIALI / MATERIALS

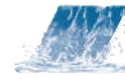
- Corpo pompa: acciaio inox AISI 304
- Giranti: PA
- Diffusori: PA
- Albero: acciaio inox AISI 304
- Valvola di ritegno incorporata
- Flangia di accoppiamento a norme NEMA

- *Pump body: AISI 304 stainless steel*
- *Impellers: PA*
- *Diffuser: PA*
- *Shaft: AISI 304 stainless steel*
- *Built-in check valve*
- *Motor coupling flange according to NEMA standards*

LIMITI DI IMPIEGO / OPERATING CONDITIONS

- Acqua con contenuto di sabbia non superiore a 250 g/m³
- Temperatura liquido pompato fino a 40°C

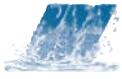
- *Maximum sand content 250 g/m³*
- *Pumped liquid temperature: 40°C max*



ELETTROPOMPE SOMMERSE MULTISTADIO 4"
SUBMERSIBLE ELECTRIC PUMPS FOR 4" WELLS

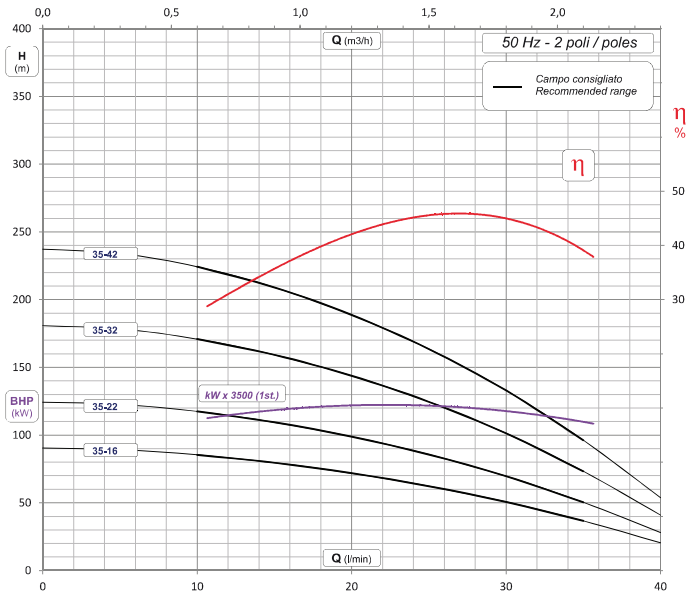
CARATTERISTICHE TECNICHE A 2900 GIRI / TECHNICAL PERFORMANCE AT 2900 RPM

Modello Model	Motore Motor		Q=Portata / Q=Capacity																								DNM	Corpo pompa Pump body							
	P2		m³/h	0,6	0,9	1,2	1,5	1,8	2,1	2,4	2,7	3	3,6	4,2	4,8	5,4	6	6,6	7,2	8,4	9,6	10,8	12	13,5	15	16,5		18	19,5	21	22,5	24	Lunghezza Length mm	Peso Weight kg	
	HP	kW	l/min	10	15	20	25	30	35	40	45	50	60	70	80	90	100	110	120	140	160	180	200	225	250	275		300	325	350	375	400			
H=Prevalenza totale / H=Total head in meters																																			
4SM 35-16	0,75	0,55	90	85	80	72	62	51	37	20																						1" 1/4 G	437	4,90	
4SM 35-22	1	0,75	124	117	109	99	86	70	50	28																						1" 1/4 G	551	6,00	
4SM 35-32	1,5	1,1	181	171	159	144	125	101	73	41																						1" 1/4 G	741	7,90	
4SM 35-42	2	1,5	237	224	209	189	163	133	96	54																						1" 1/4 G	930	9,90	
4SM 50-07	0,5	0,37	47		44	42	39	36	33	28	23	18																				1" 1/4 G	287	3,30	
4SM 50-11	0,75	0,55	70		65	63	59	54	49	43	35	27																				1" 1/4 G	375	4,10	
4SM 50-15	1	0,75	96		89	85	80	74	67	58	48	37																				1" 1/4 G	463	4,90	
4SM 50-22	1,5	1,1	140		129	124	117	107	96	83	68	50																				1" 1/4 G	617	6,30	
4SM 50-29	2	1,5	187		174	166	155	142	126	109	87	64																				1" 1/4 G	771	7,80	
4SM 50-42	3	2,2	274		254	243	227	208	185	159	128	94																				1" 1/4 G	1056	10,40	
4SM 50-56	4	3	373		346	331	310	284	253	217	175	128																				1" 1/4 G	1364	13,20	
4SM 80-07	0,75	0,55	46				44	43	42	40	38	36	32	25	18																	1" 1/4 G	287	3,30	
4SM 80-10	1	0,75	65				62	61	59	57	55	52	45	36	25																	1" 1/4 G	353	3,90	
4SM 80-15	1,5	1,1	97				91	89	87	83	80	76	65	52	36																	1" 1/4 G	463	4,90	
4SM 80-20	2	1,5	129				121	119	116	111	106	101	87	69	48																	1" 1/4 G	573	5,90	
4SM 80-29	3	2,2	193				182	178	173	167	160	151	130	103	71																	1" 1/4 G	771	7,70	
4SM 80-40	4	3	257				241	235	228	220	209	198	170	134	90																	1" 1/4 G	1012	9,80	
4SM 80-52	5,5	4	346				325	318	307	296	282	267	229	181	122																	1" 1/4 G	1276	12,60	
4SM 110-06	0,75	0,55	41						38	38	37	36	33	30	25	20	14	8	2													1" 1/4 G	265	3,10	
4SM 110-08	1	0,75	54						51	50	49	48	44	40	33	26	19	11	2													1" 1/4 G	309	3,50	
4SM 110-12	1,5	1,1	82						77	75	74	72	67	60	50	39	28	16	4													1" 1/4 G	397	4,30	
4SM 110-16	2	1,5	109						102	101	98	96	89	79	67	53	38	22	5													1" 1/4 G	485	5,10	
4SM 110-24	3	2,2	163						154	151	148	144	133	119	100	79	56	32	7													1" 1/4 G	661	6,70	
4SM 110-32	4	3	218						205	201	197	191	178	159	134	105	75	43	10													1" 1/4 G	837	9,20	
4SM 110-44	5,5	4	299						282	277	271	263	245	218	184	145	103	59	13													1" 1/4 G	1100	10,60	
4SM 180-05	1	0,75	40										34	34	33	32	30	29	28	26	24	18	12	6								2"G	333	4,10	
4SM 180-08	1,5	1,1	60										51	51	49	47	46	44	41	39	35	28	19	9								2"G	453	5,20	
4SM 180-11	2	1,5	77										67	66	64	63	60	58	55	52	47	37	25	12								2"G	573	6,20	
4SM 180-16	3	2,2	116										101	100	97	94	91	87	83	77	71	55	37	18								2"G	773	8,00	
4SM 180-22	4	3	154										135	133	129	125	121	115	110	103	95	74	50	24								2"G	1012	9,70	
4SM 180-30	5,5	4	210										187	184	178	173	166	159	150	140	129	101	67	27								2"G	1332	12,40	
4SM 180-40	7,5	5,5	266										241	238	232	224	215	203	190	176	160	124	79	31								2"G	1732	15,90	
4SM 180-50	10	7,5	370										330	325	315	305	294	280	265	248	227	179	118	47								2"G	2132	19,40	
4SM 260-03	1	0,75	26														24	23	23	22	21	20	18	15	12	8	4					2"G	253	3,00	
4SM 260-05	1,5	1,1	39														35	35	34	33	32	30	27	23	18	12	5					2"G	333	3,70	
4SM 260-07	2	1,5	52														47	46	45	44	43	40	36	30	24	16	7					2"G	413	4,40	
4SM 260-10	3	2,2	78														71	69	68	67	64	60	53	46	37	23	11					2"G	533	5,40	
4SM 260-14	4	3	104														94	93	91	89	86	80	71	61	49	31	14					2"G	693	6,80	
4SM 260-19	5,5	4	144														129	127	125	123	121	113	102	88	69	44	16					2"G	892	8,50	
4SM 260-27	7,5	5,5	197														176	174	171	168	164	154	139	120	94	60	22					2"G	1212	11,30	
4SM 260-36	10	7,5	262														235	231	228	224	219	206	185	159	126	80	30					2"G	1572	14,40	
4SM 400-05	2	1,5	36																	30	28	27	25	23	21	18	16	13	11	8	4	1	2"G	358	4,30
4SM 400-07	3	2,2	50																	42	40	37	35	33	29	25	22	19	15	11	6	1	2"G	448	5,10
4SM 400-10	4	3	72																	59	57	53	50	47	42	35	32	27	21	15	9	2	2"G	583	5,80
4SM 400-14	5,5	4	101																	83	79	75	70	65	59	49	45	37	29	21	12	3	2"G	763	7,40
4SM 400-19	7,5	5,5	137																	112	107	101	95	88	80	67	61	50	40	29	17	4	2"G	987	9,30
4SM 400-25	10	7,5	180																	148	142	133	125	116	105	88	80	66	53	38	22	5	2"G	1257	11,60

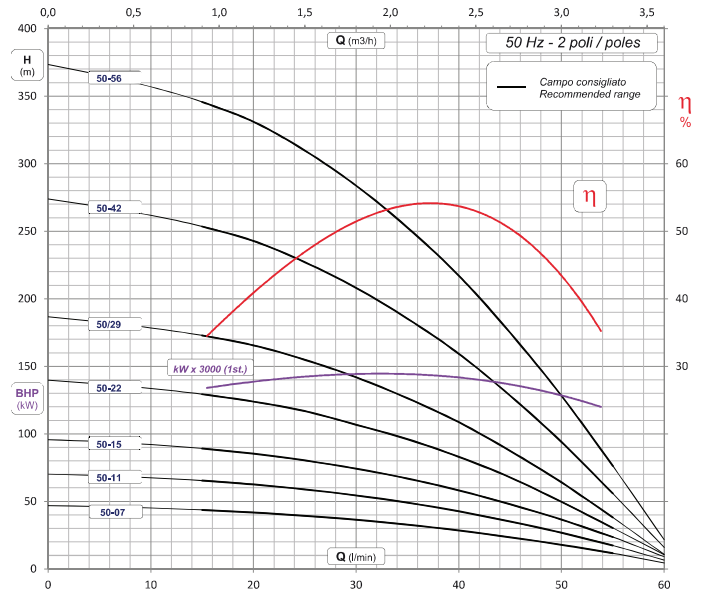


SERIE - SERIES

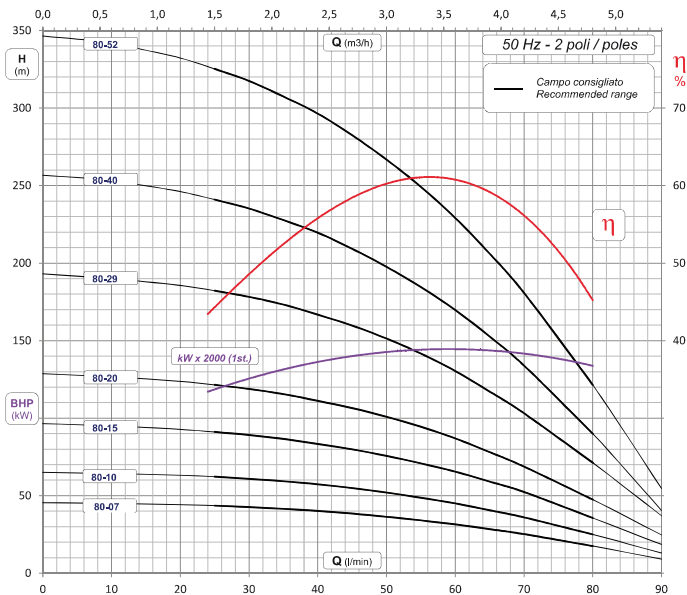
4SM



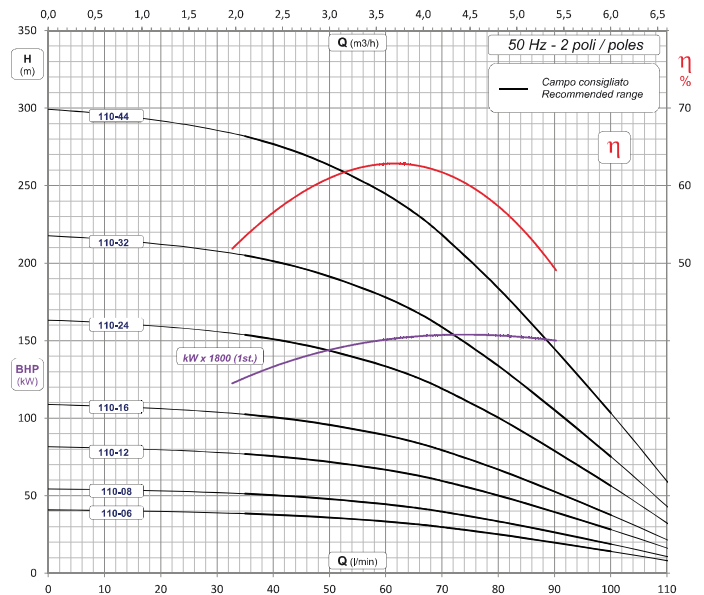
4SM 35



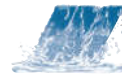
4SM 50



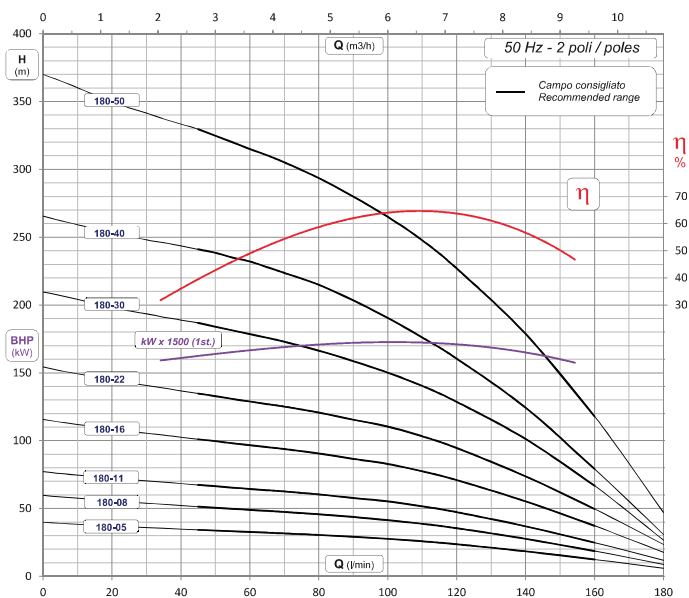
4SM 80



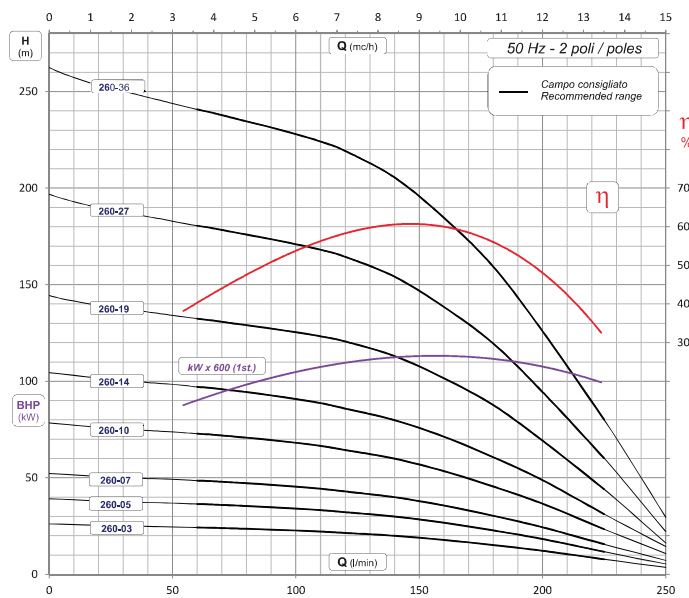
4SM 110



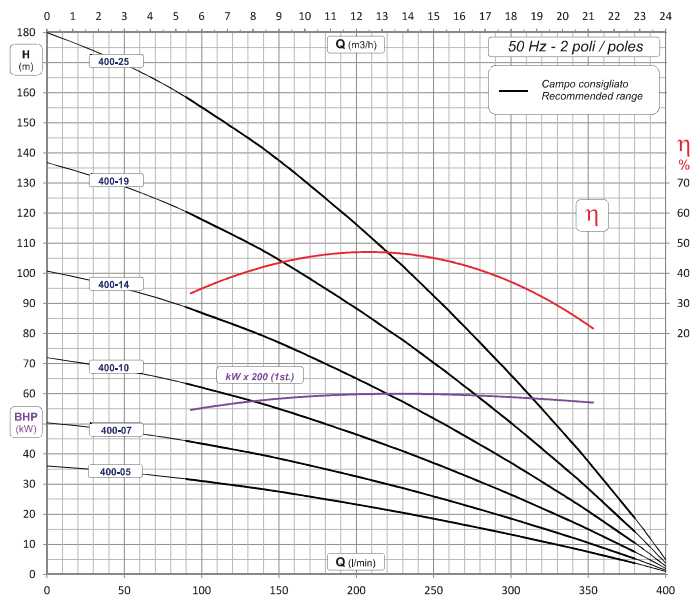
ELETTROPOMPE SOMMERSE MULTISTADIO 4" SUBMERSIBLE ELECTRIC PUMPS FOR 4" WELLS



4SM 180



4SM 260



4SM 400